

# Castleton 26



**SOUTHERN  
VALE**



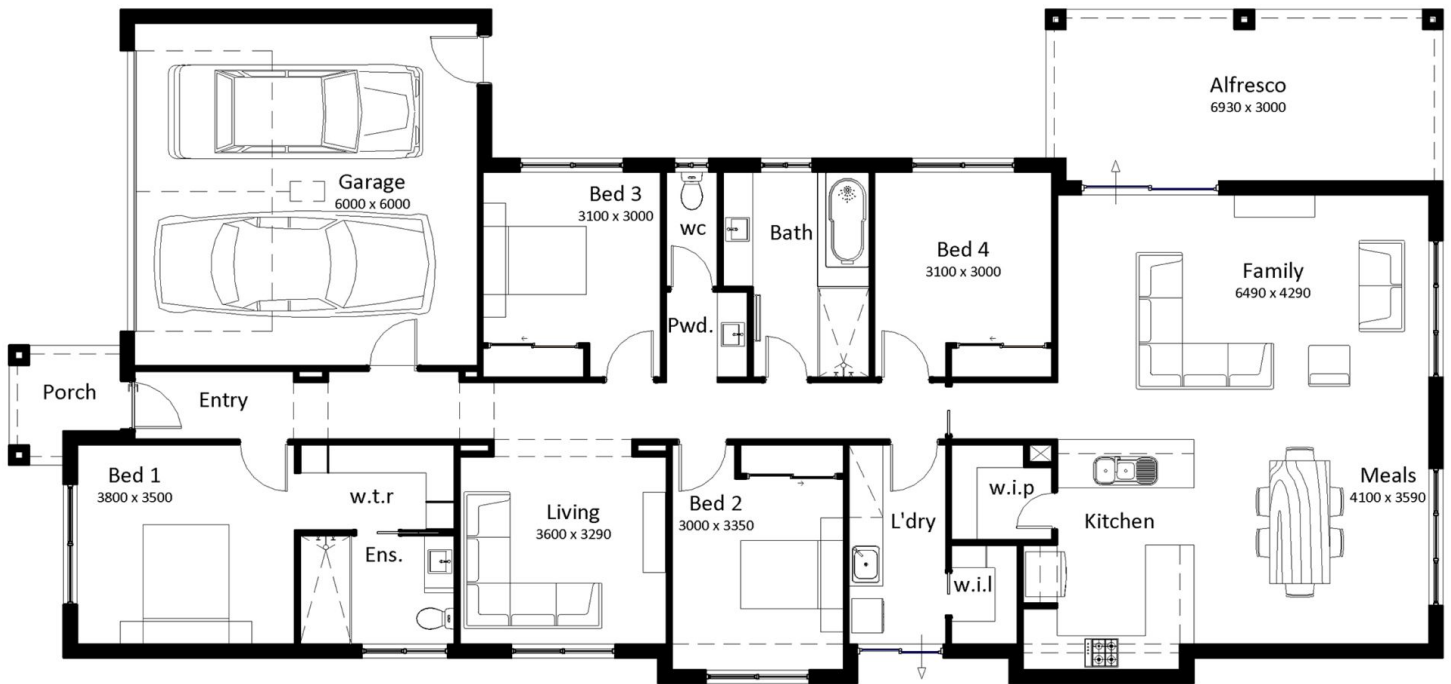
4 2 2 2

## HOUSE & LAND PACKAGE

ADDRESS Lot 206 Bourke Drive Benalla ,  
Livingston Estate  
Lot Size: 837<sup>m</sup><sup>2</sup>

FROM \$717,000\*

*Signature Inclusions*



- 450 Eaves
- 900mm oven
- All Signature Inclusions
- And much more
- Bricks over Windows and Garage
- Colorbond roofing
- Concrete driveway
- Downlights to whole of home
- Floor coverings
- Heating & Cooling

For Further Information contact our new home Consultants.

Sinead Simkin - 0418 597 329  
sales@southernvale.com.au

WWW.SOUTHERNVALE.COM.AU

SVA Pty Ltd T/as Southern Vale Homes | ABN: 89 150 500 557 All rights reserved  
Vic Licence: CDB-U 52000 (Domestic) CCB-L 76033 (Commercial) | NSW Licence: 259700C

\*Site costs are not fixed. Site costs are an allowance only and may increase depending on service connection costs, rock removal, retaining walls, tree root mitigation, developer requirements, BAL zoning and other statutory requirements. Price based on façade shown. Package not available with any other promotions. Additional options available, additional charges may apply. View the full list of Signature and Inspire inclusions [www.southernvale.com.au](http://www.southernvale.com.au). Prospective clients should seek independent legal and financial advice.

